



Blachdeker sp. z o.o.  
ul. Myślenicka 35,  
32-031 Mogilany, Polska  
GPS:  
49° 56' 55.5485"N, 19° 53' 27.9925"E

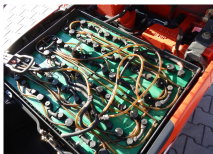
Phone: +48 12 265 74 27  
Sales: +48 606 605 100  
Rental: +48 600 227 777  
www.wozkiwidlowe24.com  
info@wozkiwidlowe24.com



## Linde E16P-02 (2015)

### Specification

Manufacturer:	Linde
Model:	E16P-02
Condition:	Used
Engine:	Electric
Year:	2015
Working hours:	5183
Capacity (kg):	1600
Load center (mm):	500
Lift height (mm):	4770
Mast type:	Triplex
Length (mm):	2080
Width (mm):	1070
Height (mm):	2170
Forks (mm):	1200
Side shift:	Yes
Cabin:	Otwarta kabina
Fork carriage:	FEM IIA
Weight (kg):	2495
Internal ID:	BD-2341



**Net price:**

**on request**

### Additional information:

- Bateria 48V / 625Ah ( 2015 rok)
- Blue Spot Lamp
- Electric drive
- Front lights / rear lights
- Opony niebrudzące przód / tył
- Prostownik 48V / 120A
- Rear view mirror
- Side shift
- Towbar